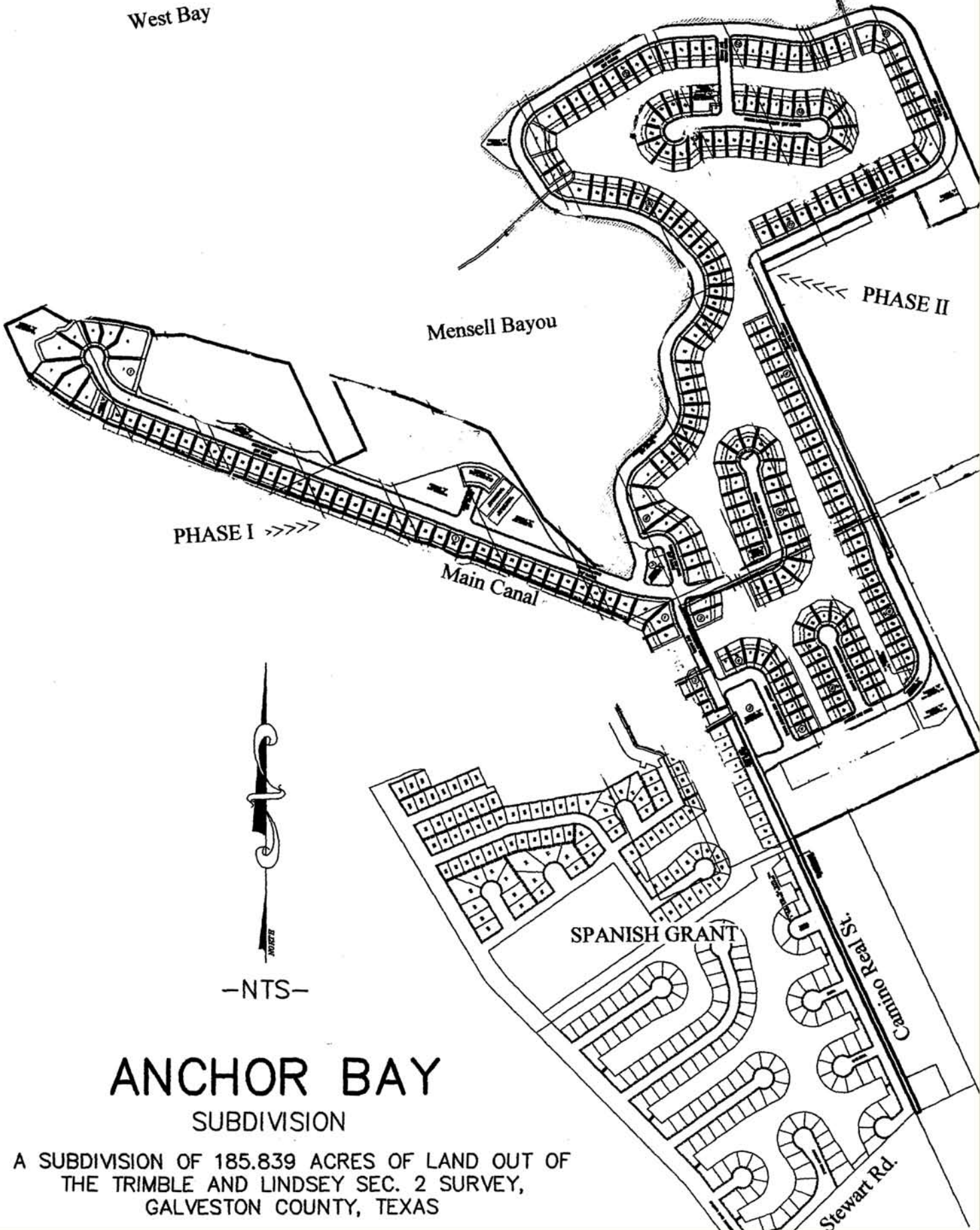


West Bay



PHASE I >>>>

PHASE II <<<<

Mensell Bayou

Main Canal

SPANISH GRANT

Camino Real St.

Stewart Rd.

-NTS-

ANCHOR BAY

SUBDIVISION

A SUBDIVISION OF 185.839 ACRES OF LAND OUT OF
THE TRIMBLE AND LINDSEY SEC. 2 SURVEY,
GALVESTON COUNTY, TEXAS